



Always Deliver More than Expected

As your one-stop clinical technology management solution, we optimize your medical equipment's potential while ensuring top-notch service quality and minimal patient care delays.

Let's Talk

7+ Years of Experience

100+ Partners and Customers

600+ Medical Equipment Repairs



WE THE MEDICAL EQUIPMENT EXPERTS

At GME Health, we understand the importance of clinical technology management.

About GME Health

We are a clinical technology management company that is a one-source solution which unlocks the full potential of your medical equipment, while still maintaining the highest quality of service on equipment and limited delay in patient care. We provide cost savings that have allowed the hospital to readjust budgets to purchase capital equipment, invest in growth opportunities, and renovate current locations.

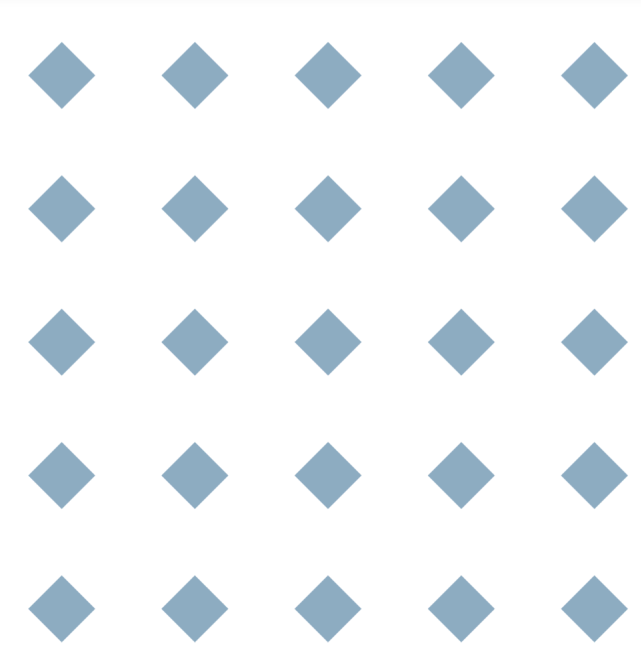
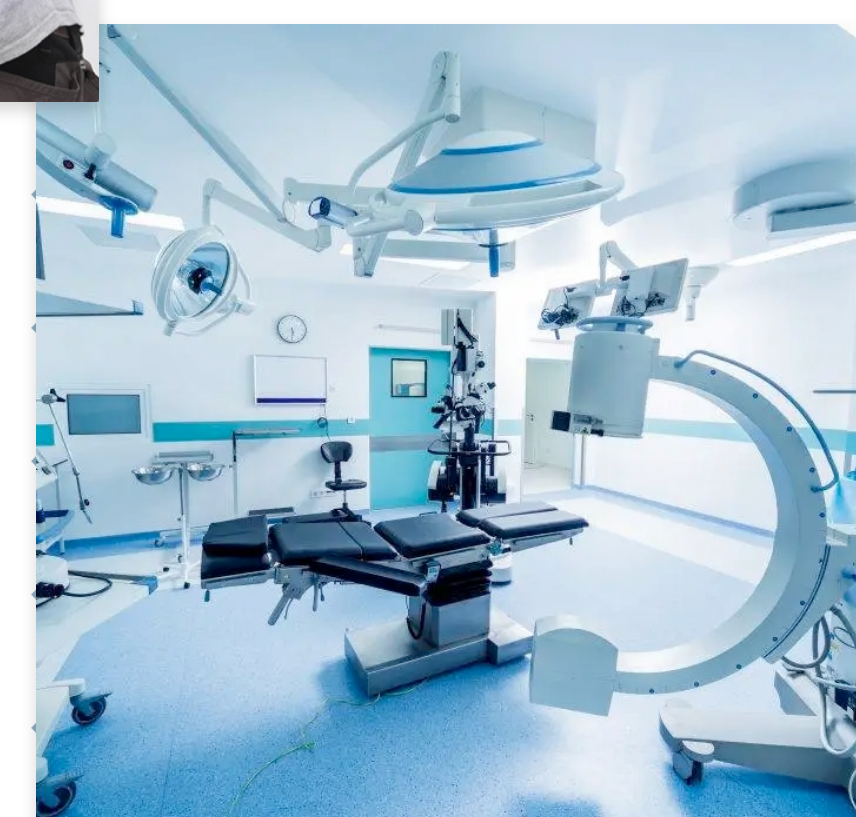
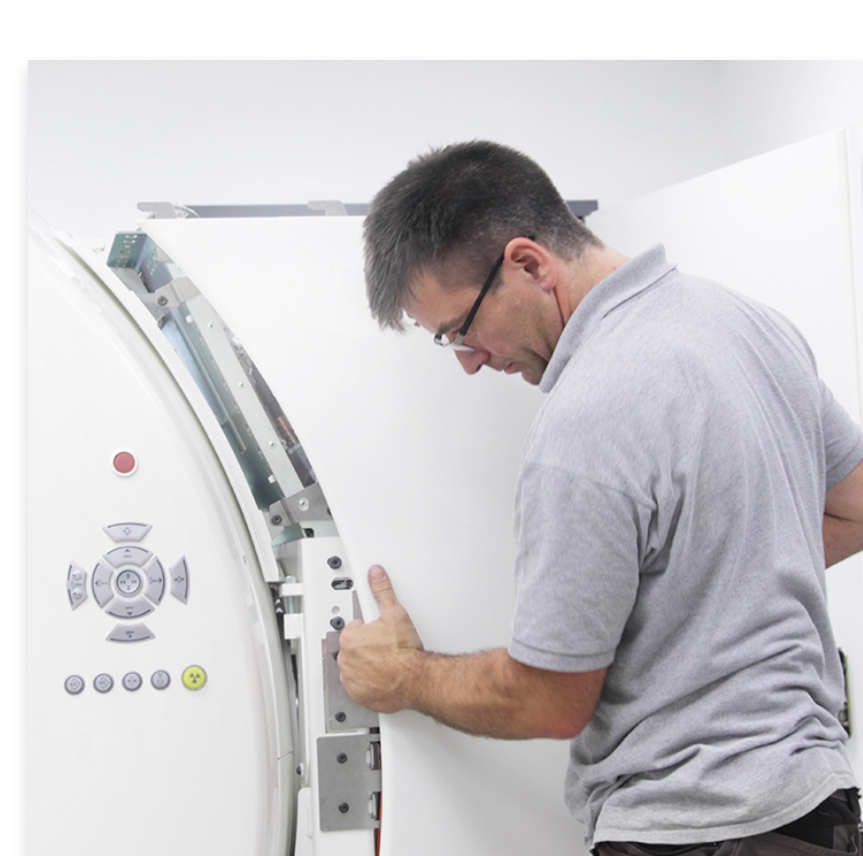
GME Health is considered a spearhead in technology by creating new Artificial Intelligence and Machine Learning platforms. Through a sit down we can discuss more of the services we can provide and if your site is willing to allow us to prove our strengths.

Our Mission

To accelerate and be the center of healthcare excellence for medical centers in providing quality services, technology and cost effective solutions.

Our Vision

To be the largest trusted partner in clinical technology management and service in healthcare.



GME HEALTH EFFECTS

How We Can Help

From streamlining equipment repairs to providing cutting-edge technology solutions, GME Health delivers comprehensive support across the entire healthcare technology lifecycle.

Financial Returns

GME Health leverages strategic clinical technology management to optimize operational efficiency, ultimately contributing to enhanced financial returns for healthcare organizations.

- Increase Revenue
- Increase ROI
- Decrease Repair Cost

Patient Satisfaction

GME Health elevates patient satisfaction by ensuring seamless clinical technology management, promoting a positive and stress-free healthcare experience.

- Increase Reputation
- Decrease Exam Rescheduling
- Decrease Patient Stress

Staff Satisfaction

GME Health fosters staff satisfaction through streamlined clinical technology management, empowering healthcare professionals with efficient tools and processes for an enhanced work experience.

- Decrease Overtime, Attrition Costs
- Decrease Clinical Stress
- Decrease Mistakes due to Fatigue

Learn more about how GME Health can unlock the full potential of your medical equipment.

Why GME?

LATEST NEWS

Our Highlights



Lorem ipsum dolor

Lorem ipsum dolor sit amet, consectetur adipiscing elit, sed do eiusmod tempor incididunt ut...

Read More



Lorem ipsum dolor

Lorem ipsum dolor sit amet, consectetur adipiscing elit, sed do eiusmod tempor incididunt ut...

Read More



Lorem ipsum dolor

Lorem ipsum dolor sit amet, consectetur adipiscing elit, sed do eiusmod tempor incididunt ut...

Read More

Always Deliver More than Expected



General Medical Equipment

MEMBERSHIP

SERVICES

WHY GME?

120 Newport Center Drive, Newport Beach CA 92660

PARTNERSHIP

Consultancy

Artificial Intelligence

info@gmehealth.com

CAREERS

Medical Equipment Services

Cyber Security

888-905-8825

NEWS

Medical Technology Management
Medical Equipment Planning



Always Deliver More than Expected

As your one-stop clinical technology management solution, we optimize your medical equipment's potential while ensuring top-notch service quality and minimal patient care delays.

Let's Talk



7+

Years of Experience

100+

Partners and Customers

600+

Medical Equipment Repairs

WE THE MEDICAL EQUIPMENT EXPERTS

At GME Health, we understand the importance of clinical technology management.

About GME Health

We are a clinical technology management company that is a one-source solution which unlocks the full potential of your medical equipment, while still maintaining the highest quality of service on equipment and limited delay in patient care. We provide cost savings that have allowed the hospital to readjust budgets to purchase capital equipment, invest in growth opportunities, and renovate current locations.

GME Health is considered a spearhead in technology by creating new Artificial Intelligence and Machine Learning platforms. Through a sit down we can discuss more of the services we can provide and if your site is willing to allow us to prove our strengths.

Our Mission

To accelerate and be the center of healthcare excellence for medical centers in providing quality services, technology and cost effective solutions.

Our Vision

To be the largest trusted partner in clinical technology management and service in healthcare.

[Learn More >](#)



GME HEALTH EFFECTS

How We Can Help

From streamlining equipment repairs to providing cutting-edge technology solutions, GME Health delivers comprehensive support across the entire healthcare technology lifecycle.

Financial Returns

GME Health leverages strategic clinical technology management to optimize operational efficiency, ultimately contributing to enhanced financial returns for healthcare organizations.

- Increase Revenue
- Increase ROI
- Decrease Repair Cost

Patient Satisfaction

GME Health elevates patient satisfaction by ensuring seamless clinical technology management, promoting a positive and stress-free healthcare experience.

- Increase Reputation
- Decrease Exam Rescheduling
- Decrease Patient Stress

Staff Satisfaction

GME Health fosters staff satisfaction through streamlined clinical technology management, empowering healthcare professionals with efficient tools and processes for an enhanced work experience.

- Decrease Overtime, Attrition Costs
- Decrease Clinical Stress
- Decrease Mistakes due to Fatigue

Learn more about how GME Health can unlock the full potential of your medical equipment.

[Why GME?](#)

LATEST NEWS

Our Highlights



Lorem ipsum dolor

Lorem ipsum dolor sit amet, consectetur adipiscing elit, sed do eiusmod tempor incididunt ut...

[Read More](#)



Lorem ipsum dolor

Lorem ipsum dolor sit amet, consectetur adipiscing elit, sed do eiusmod tempor incididunt ut...

[Read More](#)



Lorem ipsum dolor

Lorem ipsum dolor sit amet, consectetur adipiscing elit, sed do eiusmod tempor incididunt ut...

[Read More](#)

Always Deliver More than Expected



MEMBERSHIP

PARTNERSHIP

CAREERS

NEWS

SERVICES

Consultancy

Medical Equipment Services

WHY GME?

Artificial Intelligence

Cyber Security

Medical Technology Management

Medical Equipment Planning

120 Newport Center Drive, Newport Beach CA 92660

info@gmehealth.com

888-905-8825





Always Deliver More than Expected

As your one-stop clinical technology management solution, we optimize your medical equipment's potential while ensuring top-notch service quality and minimal patient care delays.

Let's Talk

7+

Years of Experience

100+

Partners and Customers

600+

Medical Equipment Repairs

WE THE MEDICAL EQUIPMENT EXPERTS

At GME Health, we understand the importance of clinical technology management.

About GME Health

We are a clinical technology management company that is a one-source solution which unlocks the full potential of your medical equipment, while still maintaining the highest quality of service on equipment and limited delay in patient care. We provide cost savings that have allowed the hospital to readjust budgets to purchase capital equipment, invest in growth opportunities, and renovate current locations.

GME Health is considered a spearhead in technology by creating new Artificial Intelligence and Machine Learning platforms. Through a sit down we can discuss more of the services we can provide and if your site is willing to allow us to prove our strengths.

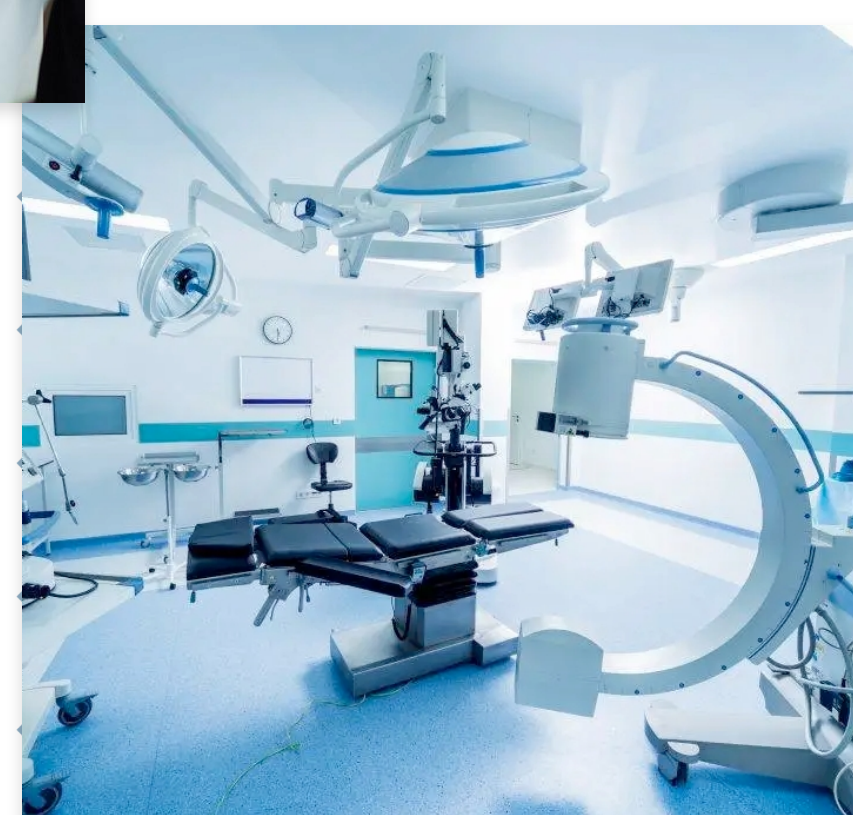
Our Mission

To accelerate and be the center of healthcare excellence for medical centers in providing quality services, technology and cost effective solutions.

Our Vision

To be the largest trusted partner in clinical technology management and service in healthcare.

Learn More >



GME HEALTH EFFECTS

How We Can Help

From streamlining equipment repairs to providing cutting-edge technology solutions, GME Health delivers comprehensive support across the entire healthcare technology lifecycle.

Financial Returns

GME Health leverages strategic clinical technology management to optimize operational efficiency, ultimately contributing to enhanced financial returns for healthcare organizations.

- Increase Revenue
- Increase ROI
- Decrease Repair Cost

Patient Satisfaction

GME Health elevates patient satisfaction by ensuring seamless clinical technology management, promoting a positive and stress-free healthcare experience.

- Increase Reputation
- Decrease Exam Rescheduling
- Decrease Patient Stress

Staff Satisfaction

GME Health fosters staff satisfaction through streamlined clinical technology management, empowering healthcare professionals with efficient tools and processes for an enhanced work experience.

- Decrease Overtime, Attrition Costs
- Decrease Clinical Stress
- Decrease Mistakes due to Fatigue

Learn more about how GME Health can unlock the full potential of your medical equipment.

Why GME?

LATEST NEWS

Our Highlights



Lorem ipsum dolor

Lorem ipsum dolor sit amet, consectetur adipiscing elit, sed do eiusmod tempor incididunt ut...

Read More



Lorem ipsum dolor

Lorem ipsum dolor sit amet, consectetur adipiscing elit, sed do eiusmod tempor incididunt ut...

Read More



Lorem ipsum dolor

Lorem ipsum dolor sit amet, consectetur adipiscing elit, sed do eiusmod tempor incididunt ut...

Read More

Always Deliver More than Expected



General Medical Equipment

MEMBERSHIP

SERVICES

WHY GME?

120 Newport Center Drive, Newport Beach CA 92660

PARTNERSHIP

Consultancy

Artificial Intelligence

info@gmehealth.com

CAREERS

Medical Equipment Services

Cyber Security

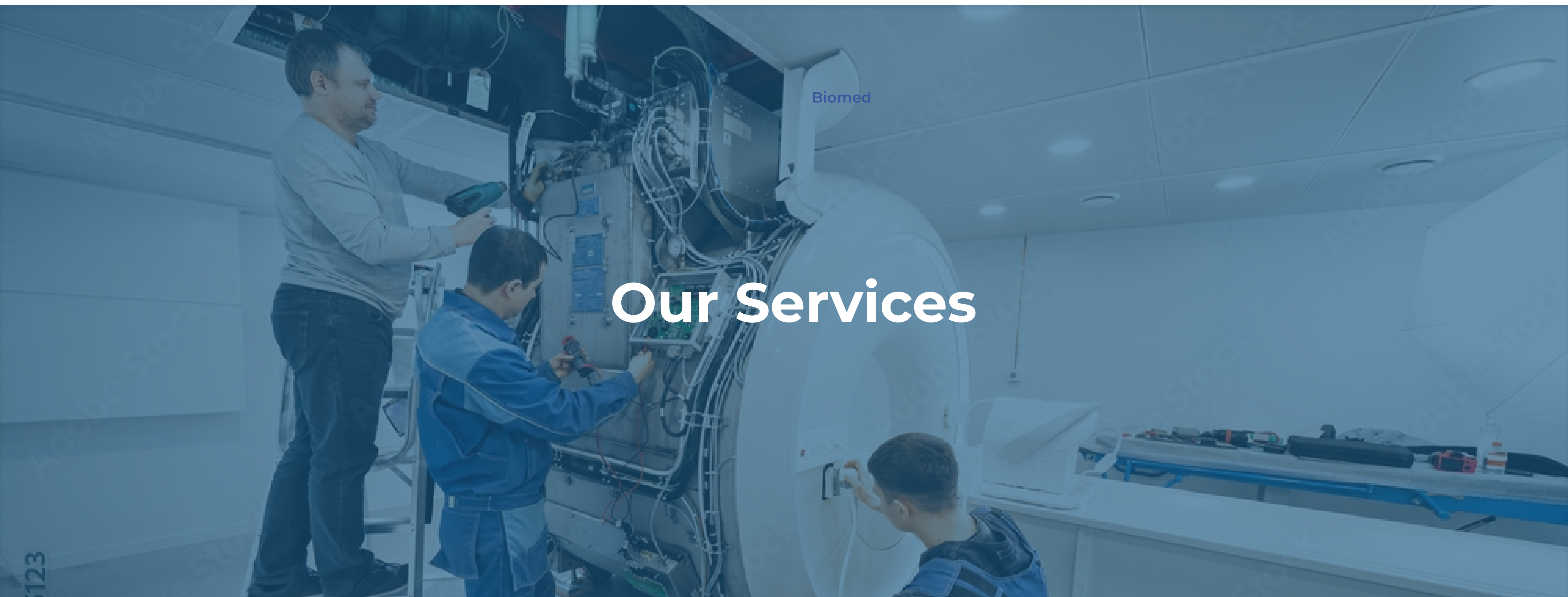
888-905-8825

NEWS

Medical Technology Management

Medical Equipment Planning





Our Services

How GME Health Can Support You

What We Provide



At GME Health, we understand the critical role that medical equipment plays in patient care. That's why we offer personalized and expert repair services to ensure that your healthcare machinery remains reliable and operational. Our dedicated team of technicians is committed to swiftly diagnosing and fixing any issues, minimizing disruptions to your practice. With our focus on excellence, we strive to empower healthcare facilities to provide the best possible care to their patients.

Imaging -

GME recognizes how important it is that your imaging equipment is up and running with no delays. We offer the best engineers to guarantee your equipment will be available with limited downtime. We understand that the service you require needs to be completed at off peak hours, so all scheduled preventative maintenance will be performed after hours and on weekends, to prevent delay in patient care. We have contracted with the best parts vendors in the country to help retrieve parts quickly, to get your system up and running when a repair is needed. We are here 24/7 for your imaging needs, and get the job done fast.

Cath Lab +

Mobile Imaging +

Install/Deinstallation +

Physicist +

Ultrasound +

Endoscopes +

Robotic Systems +

Lasers/Phaco +

Clinics +

Labs +

Rental Equipment +

Facilities +

Always Deliver
More than Expected



MEMBERSHIP

SERVICES

WHY GME?

PARTNERSHIP

Consultancy

Artificial Intelligence

CAREERS

Medical Equipment Services

Cyber Security

NEWS

Medical Technology Management

Medical Equipment Planning

120 Newport Center Drive, Newport Beach CA 92660

info@gmehealth.com

888-905-8825





Our Services

How GME Health Can Support You

What We Provide

At GME Health, we understand the critical role that medical equipment plays in patient care. That's why we offer personalized and expert repair services to ensure that your healthcare machinery remains reliable and operational. Our dedicated team of technicians is committed to swiftly diagnosing and fixing any issues, minimizing disruptions to your practice. With our focus on excellence, we strive to empower healthcare facilities to provide the best possible care to their patients.



Imaging

Lorem ipsum dolor sit amet, consectetur adipiscing elit, sed do eiusmod tempor incididunt ut...



Cath Lab

Lorem ipsum dolor sit amet, consectetur adipiscing elit, sed do eiusmod tempor incididunt ut...



Mobile Imaging

Lorem ipsum dolor sit amet, consectetur adipiscing elit, sed do eiusmod tempor incididunt ut...



Physicists

Lorem ipsum dolor sit amet, consectetur adipiscing elit, sed do eiusmod tempor incididunt ut...



Ultrasound

Lorem ipsum dolor sit amet, consectetur adipiscing elit, sed do eiusmod tempor incididunt ut...



Biomed

Lorem ipsum dolor sit amet, consectetur adipiscing elit, sed do eiusmod tempor incididunt ut...



Endoscopes

Lorem ipsum dolor sit amet, consectetur adipiscing elit, sed do eiusmod tempor incididunt ut...



Robotic Systems

Lorem ipsum dolor sit amet, consectetur adipiscing elit, sed do eiusmod tempor incididunt ut...



Lasers/Phaco

Lorem ipsum dolor sit amet, consectetur adipiscing elit, sed do eiusmod tempor incididunt ut...



Clinics

Lorem ipsum dolor sit amet, consectetur adipiscing elit, sed do eiusmod tempor incididunt ut...



Labs

Lorem ipsum dolor sit amet, consectetur adipiscing elit, sed do eiusmod tempor incididunt ut...



Rental Equipment

Lorem ipsum dolor sit amet, consectetur adipiscing elit, sed do eiusmod tempor incididunt ut...



Facilities

Lorem ipsum dolor sit amet, consectetur adipiscing elit, sed do eiusmod tempor incididunt ut...

Always Deliver
More than Expected



MEMBERSHIP

PARTNERSHIP

CAREERS

NEWS

SERVICES

Consultancy

Medical Equipment Services

WHY GME?

Artificial Intelligence

Cyber Security

Medical Technology Management

Medical Equipment Planning

120 Newport Center Drive, Newport Beach CA 92660

info@gmehealth.com

888-905-8825



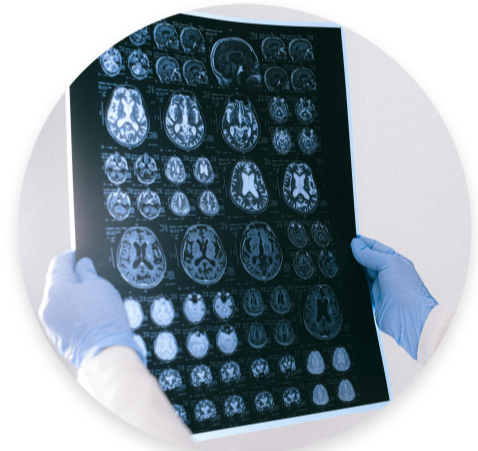
Services



How GME Health Can Support You

What We Provide

At GME Health, we understand the critical role that medical equipment plays in patient care. That's why we offer personalized and expert repair services to ensure that your healthcare machinery remains reliable and operational. Our dedicated team of technicians is committed to swiftly diagnosing and fixing any issues, minimizing disruptions to your practice. With our focus on excellence, we strive to empower healthcare facilities to provide the best possible care to their patients.



Imaging



Cath Lab



Mobile Imaging



Physicists



Ultrasound



Biomed



Endoscopes



Robotic Systems



Lasers/Phaco



Clinics



Labs



Rental Equipment



Facilities

Always Deliver
More than Expected



MEMBERSHIP

PARTNERSHIP

CAREERS

SERVICES

Consultancy

Medical Equipment Services

WHY GME?

Artificial Intelligence

Cyber Security

Medical Technology Management

Medical Equipment Planning

120 Newport Center Drive, Newport Beach CA 92660

info@gmehealth.com

888-905-8825



Our Services

How GME Health Can Support You

What We Provide

At GME Health, we understand the critical role of medical imaging. That's why we offer personalized and expert repair services that remain reliable and operational. Our dedicated team swiftly diagnoses and fixes any issues, minimizing downtime. With excellence, we strive to empower healthcare facilities.



Imaging

GME recognizes how important it is that your imaging equipment is up and running with no delays. We offer the best engineers to guarantee your equipment will be available with limited downtime. We understand that the service you require needs to be completed at off peak hours, so all scheduled preventative maintenance will be performed after hours and on weekends, to prevent delay in patient care. We have contracted with the best parts vendors in the country to help retrieve parts quickly, to get your system up and running when a repair is needed. We are here 24/7 for your imaging needs, and get the job done fast.

Imaging

Lorem ipsum dolor sit amet, consectetur adipiscing elit, sed do eiusmod tempor incididunt ut...

Lorem ipsum dolor sit amet, consectetur adipiscing elit, sed do eiusmod tempor incididunt ut...

Lorem ipsum dolor sit amet, consectetur adipiscing elit, sed do eiusmod tempor incididunt ut...

Imaging

Our Services



Imaging

GME recognizes how important it is that your imaging equipment is up and running with no delays. We offer the best engineers to guarantee your equipment will be available with limited downtime.

We understand that the service you require needs to be completed at off peak hours, so all scheduled preventative maintenance will be performed after hours and on weekends, to prevent delay in patient care. We have contracted with the best parts vendors in the country to help retrieve parts quickly, to get your system up and running when a repair is needed. We are here 24/7 for your imaging needs, and get the job done fast.



How GME Health Can Support You

What We Provide

At GME Health, we understand the critical role of imaging in patient care. That's why we offer personalized and expert service that remains reliable and operational. Our dedicated team is focused on swiftly diagnosing and fixing any issues, minimizing downtime. With excellence, we strive to empower healthcare facilities.

Imaging

Lorem ipsum dolor sit amet, consectetur adipiscing elit, sed do eiusmod tempor incididunt ut...

Lorem ipsum dolor sit amet, consectetur adipiscing elit, sed do eiusmod tempor incididunt ut...

Lorem ipsum dolor sit amet, consectetur adipiscing elit, sed do eiusmod tempor incididunt ut...

Imaging



Contact Us

Get In Touch

Branches and Representative Offices

United States Address: 120 Newport Center Drive, Newport Beach CA 92660
 Phone: +1 888 905 8825
 Fax: 714 398 8188
 Email: Info@gmehealth.com

Europe Address: 50 Grosvenor Hill, London W1K 3QT, United Kingdom
 Phone: +1 888 905 8825
 Email: Info@gmehealth.com

Middle East Address: P.O. BOX 126535 Jeddah 21352 K.S.A
 Phone: + 966 2 663 9633
 Email: Info@gmehealth.com

Send a Message

Let's connect to discuss your interest and inquiries about GME Health.

Name:

Email Address:

Message

Submit



Always Deliver More than Expected



Contact Us

Get In Touch

Branches and Representative Offices

United States

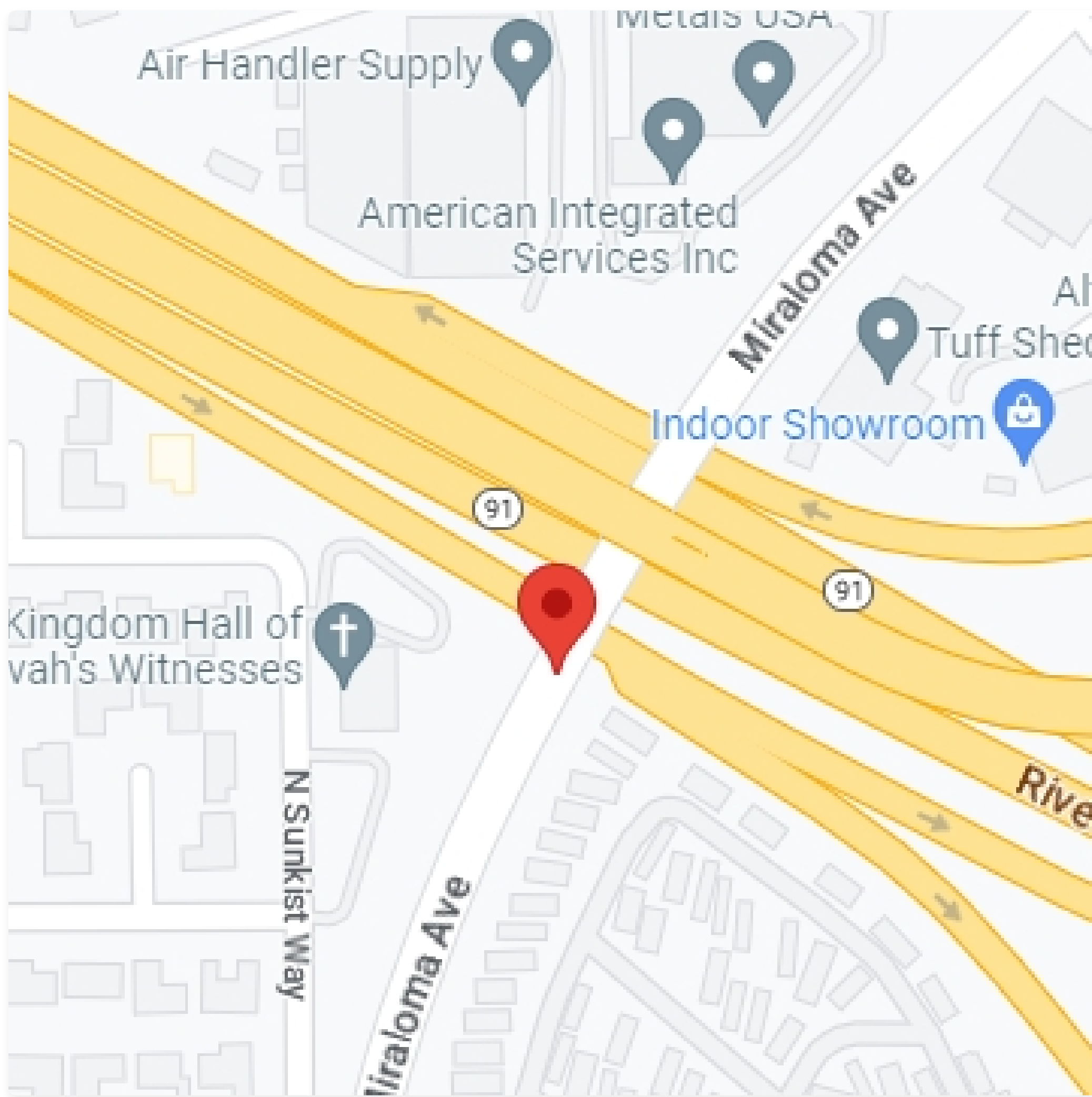
Address: 120 Newport Center Drive, Newport Beach CA 92660
 Phone: +1 888 905 8825
 Fax: 714 398 8188
 Email: Info@gmehealth.com

Europe

Address: 50 Grosvenor Hill, London W1K 3QT, United Kingdom
 Phone: +1 888 905 8825
 Email: Info@gmehealth.com

Middle East

Address: P.O. BOX 126535 Jeddah 21352 K.S.A
 Phone: + 966 2 663 9633
 Email: Info@gmehealth.com



Send a Message

Let's connect to discuss your interest and inquiries about GME Health.

Name:

Email Address:

Message

Submit

Always Deliver
More than Expected

Contact



Get In Touch

Branches and Representative Offices

United States

Address: 120 Newport Center Drive, Newport Beach CA 92660

Phone: +1 888 905 8825

Fax: 714 398 8188

Email: Info@gmehealth.com

Europe

Address: 50 Grosvenor Hill, London W1K 3QT, United Kingdom

Phone: +1 888 905 8825

Email: Info@gmehealth.com

Middle East

Address: P.O. BOX 126535 Jeddah 21352 K.S.A

Phone: + 966 2 663 9633

Email: Info@gmehealth.com

Send a Message

Let's connect to discuss your interest and inquiries about GME Health.

Name:

Email Address:

Message

Submit



Always Deliver
More than Expected



MEMBERSHIP

PARTNERSHIP

CAREERS

NEWS

SERVICES

Consultancy

Medical Equipment Services

WHY GME?

Artificial Intelligence

Cyber Security

Medical Technology Management

Medical Equipment Planning

120 Newport Center Drive, Newport Beach CA 92660

info@gmehealth.com

888-905-8825





Membership

Join The Community

We've got a plan that's perfect for you

We at GME know you have a busy schedule and don't have the time or the resources that will allow you to take advantage of revenue growth. With our packages we provide you with the tools and resources that can eliminate unnecessary spending, provide discounts with spending power on national and international levels, and give your site the option to make sound investments both in revenue growth and to make your hospital Smart.

Silver Package	Gold Package	Platinum Package
50k Total Annually	75k Total Annually	100k Total Annually
Basic Features for your organization	Advanced Features for your organization	Premium Advanced Features for your organization
Features	Features	Features
<ul style="list-style-type: none"> Semiannual report of population Contract Review and Accountability Procurement plan optimization through Supply Chain Artificial Intelligence and Machine Learning Package 	<ul style="list-style-type: none"> Semiannual report of population Contract Review and Accountability Procurement plan optimization through Supply Chain Artificial Intelligence and Machine Learning Package Innovation Team Investment Opportunities Invitation to 2 healthcare summits with networking capabilities Link to international proposals 	<ul style="list-style-type: none"> Semiannual report of population Contract Review and Accountability Procurement plan optimization through Supply Chain Artificial Intelligence and Machine Learning Package Innovation Team Investment Opportunities Invitation to 2 healthcare summits with networking capabilities Link to international proposals Login password to dashboard objectives customized to sites need Monthly reviews of site to guarantee best ROI
Chat with Sales Representative	Chat with Sales Representative	Chat with Sales Representative

Always Deliver
More than Expected



Membership



Join The Community

We've got a plan that's perfect for you

We at GME know you have a busy schedule and don't have the time or the resources that will allow you to take advantage of revenue growth. With our packages we provide you with the tools and resources that can eliminate unnecessary spending, provide discounts with spending power on national and international levels, and give your site the option to make sound investments both in revenue growth and to make your hospital Smart.

Silver Package

50k

Total Annually

Basic Features for your organization

Chat with Sales Representative

Gold Package

75k

Total Annually

Advanced Features for your organization

Chat with Sales Representative

Platinum Package

100k

Total Annually

Premium Advanced Features for your organization

Chat with Sales Representative

INCLUDES:

Semiannual report of population

Contract Review and Accountability

Procurement plan optimization through Supply Chain

Artificial Intelligence and Machine Learning Package

INCLUDES:

Semiannual report of population

Contract Review and Accountability

Procurement plan optimization through Supply Chain

Artificial Intelligence and Machine Learning Package

Innovation Team Investment Opportunities

Invitation to 2 healthcare summits with networking capabilities

Link to international proposals

INCLUDES:

Semiannual report of population

Contract Review and Accountability

Procurement plan optimization through Supply Chain

Artificial Intelligence and Machine Learning Package

Innovation Team Investment Opportunities

Invitation to 2 healthcare summits with networking capabilities

Link to international proposals

Login password to dashboard objectives customized to sites need

Monthly reviews of site to guarantee best ROI

Always Deliver
More than Expected



General Medical Equipment*

MEMBERSHIP

SERVICES

WHY GME?

120 Newport Center Drive, Newport Beach CA 92660

PARTNERSHIP

Consultancy

Artificial Intelligence

info@gmehealth.com

CAREERS

Medical Equipment Services

Cyber Security

888-905-8825

NEWS

Medical Technology Management

Medical Equipment Planning





Membership

Join The Community

We've got a plan that's perfect for you

We at GME know you have a busy schedule and don't have the time or the resources that will allow you to take advantage of revenue growth. With our packages we provide you with the tools and resources that can eliminate unnecessary spending, provide discounts with spending power on national and international levels, and give your site the option to make sound investments both in revenue growth and to make your hospital Smart.

Silver Package

50k Total Annually

Basic Features for your organization

[Chat with Sales Representative](#)

Features

- Semiannual report of population
- Contract Review and Accountability
- Procurement plan optimization through Supply Chain
- Artificial Intelligence and Machine Learning Package

Gold Package

75k Total Annually

Advanced Features for your organization

[Chat with Sales Representative](#)

Features

- Semiannual report of population
- Contract Review and Accountability
- Procurement plan optimization through Supply Chain
- Artificial Intelligence and Machine Learning Package
- Innovation Team Investment Opportunities
- Invitation to 2 healthcare summits with networking capabilities
- Link to international proposals

Platinum Package

100k Total Annually

Premium Advanced Features for your organization

[Chat with Sales Representative](#)

Features

- Semiannual report of population
- Contract Review and Accountability
- Procurement plan optimization through Supply Chain
- Artificial Intelligence and Machine Learning Package
- Innovation Team Investment Opportunities
- Invitation to 2 healthcare summits with networking capabilities
- Link to international proposals
- Login password to dashboard objectives customized to sites need
- Monthly reviews of site to guarantee best ROI

Always Deliver
More than Expected



Consultancy



Reimagining Healthcare

Build a Profitable Future with GME Health

Our consultancy firm can take a failing hospital and change to profitable. Through review of current practices, we study each department and create an efficiency report. With implementation and training of new procedures with in a year you can see the transformation to SUCCESS!



Multiple Development Review

GME will come onsite and meet with every department from Clinical Engineering, Radiology (Imaging), Facilities, IT and Security to determine what practices are used. We will complete an equipment inventory and service evaluation and create a cost saving report to be implemented at your site.

Staffing Review

GME will review staffing in each department and their skill sets. This allows us to see what further training is required. We can then adjust staffing to hospital needs.



Contract Review

Let GME review your current contracts. We will hold them to the standards you were guaranteed; from up-time, onsite service, and phone support. If they are violating the contract we can help you either get compensated with a refund or allow you to cancel the contract with no fee penalties. We then can find you the best contract that serves your needs or provide staff that is trained to support this equipment.

Technology Review

GME will look at what your site currently has from EMR (electronic medical records) to cabling, and security systems to make sure you are prepared for the future. We can also provide Artificial Intelligence (AI) and Machine Learning (ML) on your medical equipment. AI and ML helps in predictive failures which allows Medzon to improve up-time on equipment. It also monitors staff use on equipment to help generate more services that can be implemented. With RTLS (real time location system), GME can help reduce cost in purchasing and renting unnecessary equipment through device tracking.



Always Deliver
More than Expected



General Medical Equipment

MEMBERSHIP

PARTNERSHIP

CAREERS

NEWS

SERVICES

Consultancy

Medical Equipment Services

WHY GME?

Artificial Intelligence

Cyber Security

Medical Technology Management

Medical Equipment Planning

120 Newport Center Drive, Newport Beach CA 92660

info@gmehealth.com

888-905-8825





Consultancy



Reimagining Healthcare

Build a Profitable Future

Our consultancy firm can take a failing hospital and change to profitable. Through review of current practices, we study each department and create an efficiency report. With implementation and training of new procedures within a year you can see the transformation to SUCCESS!

Technology Review

GME will look at what your site currently has from EMR (electronic medical records) to cabling, and security systems to make sure you are prepared for the future. We can also provide Artificial Intelligence (AI) and Machine Learning (ML) on your medical equipment. AI and ML helps in predictive failures which allows Medzon to improve up-time on equipment. It also monitors staff use on equipment to help generate more services that can be implemented. With RTLS (real time location system).

Multiple Development Review

GME will come onsite and meet with every department from Clinical Engineering, Radiology (Imaging), Facilities, IT and Security to determine what practices are used. We will complete an equipment inventory and service evaluation and create a cost saving report to be implemented at your site.

Contract Review

Let GME review your current contracts. We will hold them to the standards you were guaranteed; from up-time, onsite service, and phone support. If they are violating the contract we can help you either get compensated with a refund or allow you to cancel the contract with no fee penalties. We then can find you the best contract that serves your needs or provide staff that is trained to support this equipment.

Staffing Review

GME will review staffing in each department and their skill sets. This allows us to see what further training is required. We can then adjust staffing to hospital needs.

Always Deliver
More than Expected

MEMBERSHIP

PARTNERSHIP

CAREERS

NEWS

SERVICES

Consultancy

Medical Equipment Services

WHY GME?

Artificial Intelligence

Cyber Security

Medical Technology Management

Medical Equipment Planning



General Medical Equipment*

120 Newport Center Drive, Newport Beach CA 92660

info@gmehealth.com

888-905-8825





Reimagining Healthcare

Build a Profitable Future with GME Health



Our consultancy firm can take a failing hospital and change to profitable. Through review of current practices, we study each department and create an efficiency report. With implementation and training of new procedures with in a year you can see the transformation to SUCCESS!

Multiple Development Review

GME will come onsite and meet with every department from Clinical Engineering, Radiology (Imaging), Facilities, IT and Security to determine what practices are used. We will complete an equipment inventory and service evaluation and create a cost saving report to be implemented at your site.

Staffing Review

GME will review staffing in each department and their skill sets. This allows us to see what further training is required. We can then adjust staffing to hospital needs.

Contract Review

Let GME review your current contracts. We will hold them to the standards you were guaranteed; from up-time, onsite service, and phone support. If they are violating the contract we can help you either get compensated with a refund or allow you to cancel the contract with no fee penalties. We then can find you the best contract that serves your needs or provide staff that is trained to support this equipment.

Technology Review

GME will look at what your site currently has from EMR (electronic medical records) to cabling, and security systems to make sure you are prepared for the future. We can also provide Artificial Intelligence (AI) and Machine Learning (ML) on your medical equipment. AI and ML helps in predictive failures which allows Medzon to improve up-time on equipment. It also monitors staff use on equipment to help generate more services that can be implemented. With RTLS (real time location system). GME can help reduce cost in purchasing and renting unnecessary equipment through device tracking.

Always Deliver
More than Expected

Partnerships



Our Partners

Building Bridges for Success



Leo A Daly

LEO A DALY is an internationally-recognized, award-winning architecture, engineering, planning, interior design, and program management firm. We are consistently ranked among the top design firms in the world. Our diverse portfolio includes world-class projects in more than 91 countries, all 50 US states, and the District of Columbia.

GME has teamed up with Leo A Daly to guarantee any hospital whether from brand new or restructured encompasses the newest technology.

[Visit Leo](#)

MedZon Health

We at Medzon are here for the people. We are an American base company that took a different approach in the pandemic of Covid-19, to serve and provide PPE to healthcare systems, clinics, factories, retailers, and the public consumer. Medzon has signed a partnership agreement with multiple factories both internationally and locally. We are guaranteeing our supplies have the right certifications from: FDA, NIOSH & CE approved.

[Visit Medzon](#)

Always Deliver
More than Expected

MEMBERSHIP

SERVICES

WHY GME?

PARTNERSHIP

Consultancy

Artificial Intelligence

CAREERS

Medical Equipment Services

Cyber Security

NEWS

Medical Technology Management

Medical Equipment Planning



General Medical Equipment

120 Newport Center Drive, Newport Beach CA 92660

info@gmehealth.com

888-905-8825





Partnerships



Our Partners

Building Bridges for Success



LEO A DALY is an internationally-recognized, award-winning architecture, engineering, planning, interior design, and program management firm. We are consistently ranked among the top design firms in the world. Our diverse portfolio includes world-class projects in more than 91 countries, all 50 US states, and the District of Columbia. GME has teamed up with Leo A Daly to guarantee any hospital whether from brand new or restructured encompasses the newest technology.

[Visit Leo](#)



We at Medzon are here for the people. We are an American base company that took a different approach in the pandemic of Covid-19, to serve and provide PPE to healthcare systems, clinics, factories, retailers, and the public consumer. Medzon has signed a partnership agreement with multiple factories both internationally and locally. We are guaranteeing our supplies have the right certifications from: FDA, NIOSH & CE approved.

[Visit Medzon](#)

Always Deliver
More than Expected

MEMBERSHIP

SERVICES

WHY GME?

PARTNERSHIP

Consultancy

Artificial Intelligence

CAREERS

Medical Equipment Services

Cyber Security

NEWS

Medical Technology Management

Medical Equipment Planning



General Medical Equipment

120 Newport Center Drive, Newport Beach CA 92660

info@gmehealth.com

888-905-8825





Partnerships



Our Partners

Building Bridges for Success



Leo A Daly

LEO A DALY is an internationally-recognized, award-winning architecture, engineering, planning, interior design, and program management firm. We are consistently ranked among the top design firms in the world. Our diverse portfolio includes world-class projects in more than 91 countries, all 50 US states, and the District of Columbia.

GME has teamed up with Leo A Daly to guarantee any hospital whether from brand new or restructured encompasses the newest technology.

[Visit Leo](#)

MedZon Health

We at Medzon are here for the people. We are an American base company that took a different approach in the pandemic of Covid-19, to serve and provide PPE to healthcare systems, clinics, factories, retailers, and the public consumer. Medzon has signed a partnership agreement with multiple factories both internationally and locally. We are guaranteeing our supplies have the right certifications from: FDA, NIOSH & CE approved.

[Visit Medzon](#)

Always Deliver
More than Expected

MEMBERSHIP

PARTNERSHIP

CAREERS

NEWS

SERVICES

Consultancy

Medical Equipment Services

WHY GME?

Artificial Intelligence

Cyber Security

Medical Technology Management

Medical Equipment Planning



General Medical Equipment[®]

120 Newport Center Drive, Newport Beach CA 92660

info@gmehealth.com

888-905-8825



Solutions



Healthcare Management

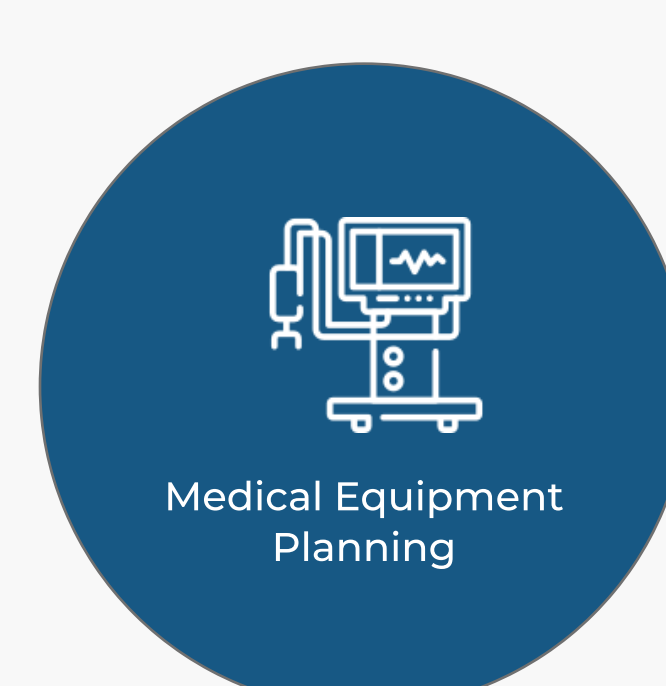
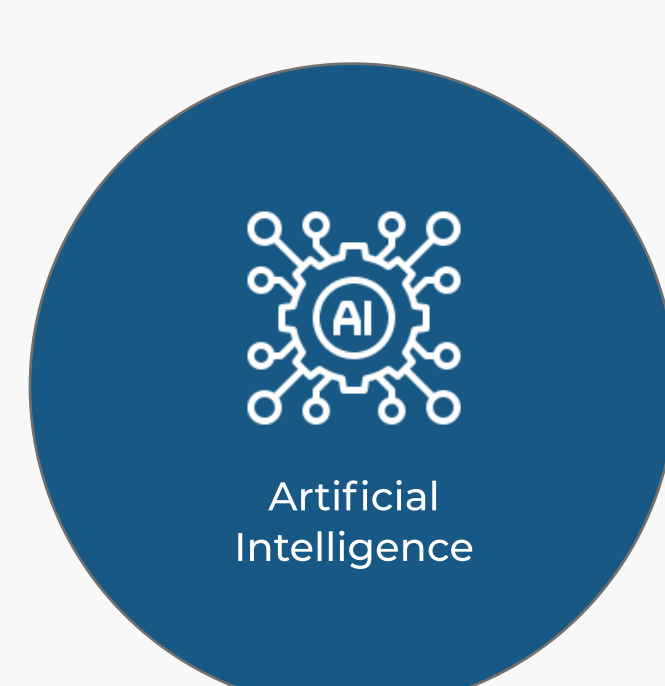
Why Choose GME Health?

At GME Health, we understand that your health journey is deeply personal, which is why we're dedicated to being more than just a healthcare provider—we're your trusted partner. When you choose GME Health for integrated healthcare solutions, including AI, cybersecurity, medical technology management, and medical equipment planning, you're choosing a team that cares about your well-being as much as you do. Our AI-driven solutions aren't just about technology; they're about tailoring care to your individual needs, ensuring that every aspect of your experience is optimized for your best outcomes.

With our robust cybersecurity measures, we prioritize the security and privacy of your personal health information, giving you peace of mind throughout your healthcare journey. And when it comes to medical technology management and equipment planning, our expertise ensures that you always have access to the latest innovations and resources to support your health goals. At GME Health, we're here to walk with you every step of the way, providing personalized, cutting-edge care that empowers you to live your healthiest life.

GME Health Solutions

Our Integrated Healthcare Solutions



Artificial Intelligence

At GME Health, our AI integration is more than just innovative technology; it's a transformative tool designed to enhance every aspect of healthcare delivery. With our AI solutions, we predict equipment failures within a remarkable 7-day window, ensuring uninterrupted patient care and operational efficiency. By analyzing utilization patterns, we optimize equipment use, maximizing resource allocation and minimizing downtime. Moreover, our AI platform goes beyond predictive maintenance, offering staff training modules that promote proficiency and empower healthcare professionals with advanced techniques. Through AI-driven insights, we identify opportunities for implementing revenue-generating procedures, contributing to the financial health of healthcare institutions. Additionally, our AI capabilities assist in preparing realistic capital budget schedules, enabling strategic resource planning and allocation. With a commitment to reliability, we guarantee 99% uptime on equipment, ensuring continuous service delivery. Furthermore, our AI algorithms pinpoint system failures and inefficiencies, facilitating the implementation of best practice solutions for optimized healthcare delivery. At GME Health, our AI solutions revolutionize healthcare management, driving efficiency, reliability, and excellence in patient care.

Cyber Security

At GME Health, our AI integration is more than just innovative technology; it's a transformative tool. Cybersecurity has become a major issue in organizations, by threatening attacks on (a) Medical devices disrupting care by turning off all types of devices or cutting off power supply in surgery rooms (b) Patient information which includes access to date of birth, social security number, driver license, address, phone number, credit card and much more. The risk and threat of cyberattacks will only grow knowing that were heading towards more date driven and (IIOT) internet.

We can help protect both medical device networks and patient information by working with your in house IS or IT departments and implementing a firewall platform that is updated and monitored by our expert cybersecurity team.

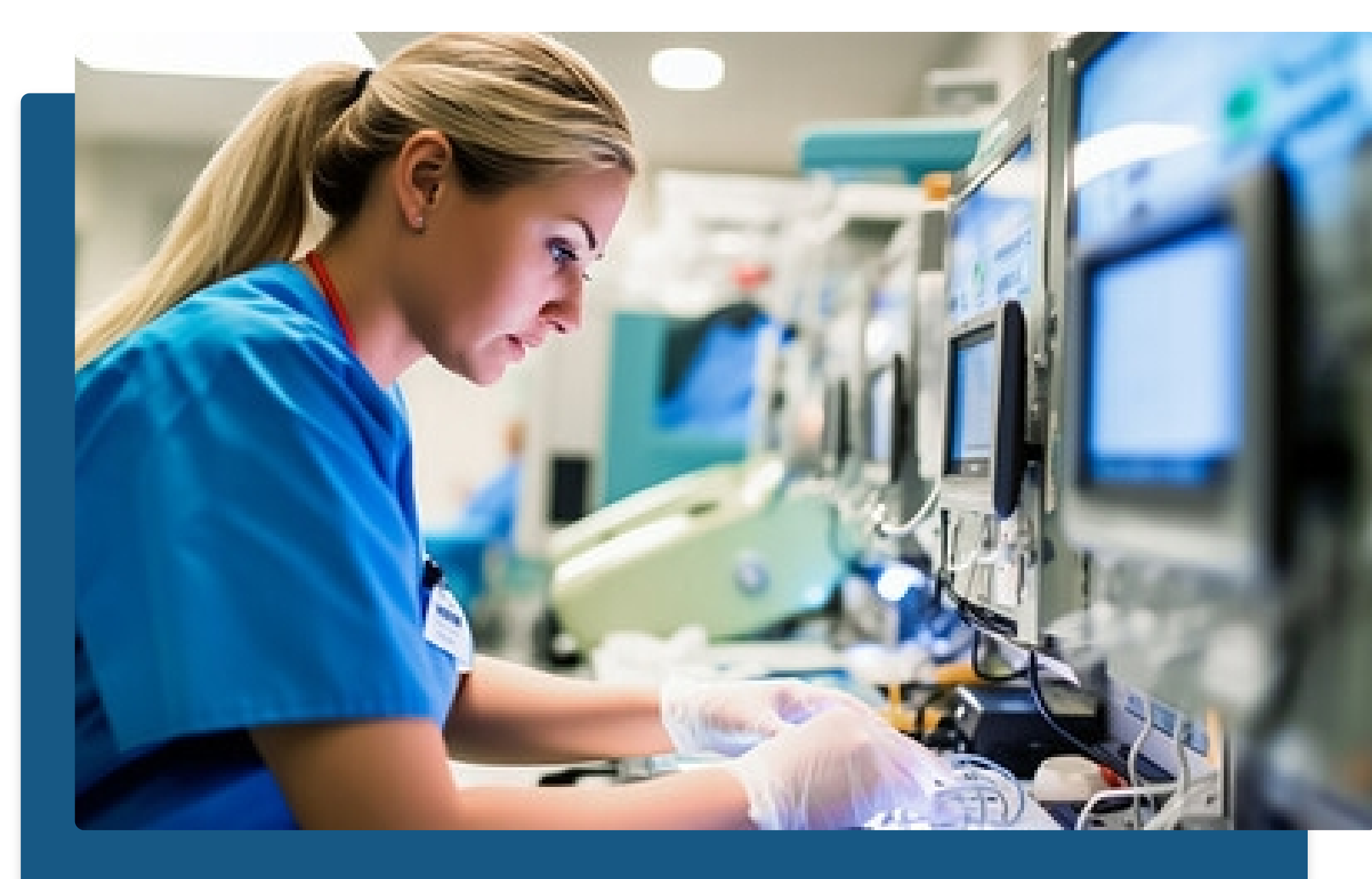


Medical Technology Management

One of GME's pillars is Medical Technology Management where the focus is not only on service but also on connecting with advanced technology. At GME we can bring in solutions using Artificial Intelligence & Machine Learning platforms to be connected with medical equipment.

With this program we can manage your complete Clinical Engineering department. If your department is complete we can just come onsite and upgrade it using the latest technology to prevent downtime on equipment.

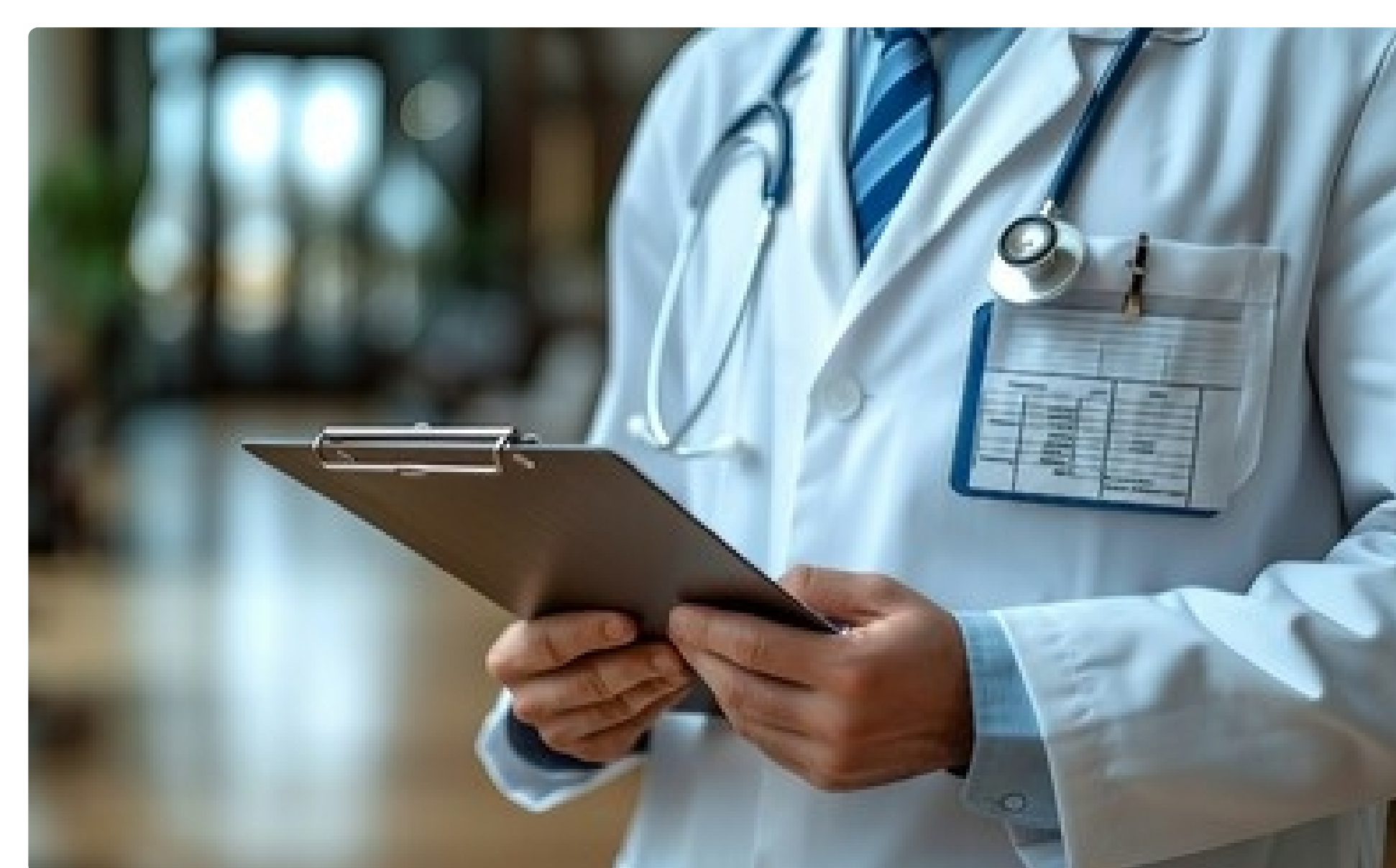
Another one of our solutions can be used in surgical rooms and centers where we bring state of the art in technology to save money, provide the best in quality of service, and allow your site to boost about advancement.



Medical Equipment Planning

At GME Health, our AI integration is more than just innovative technology; it's a transformative tool. GME is working throughout the world on Medical Equipment Planning where we bring vast knowledge, experience and most importantly purchasing options. Through our research we can be part of your capital budget committees to plan your hospital's goals for future purchase options. From short term emergency situations to long term goals we can find the best plan for you.

GME guarantees the hospital procures the right equipment from the right Original equipment manufacturer (OEM). Taking into consideration the cost, longevity, ease of use for technicians / doctors, parts and services readily available for engineers, overall value and quality of system throughout the house.



Always Deliver
More than Expected



MEMBERSHIP

SERVICES

WHY GME?

120 Newport Center Drive, Newport Beach CA 92660

PARTNERSHIP

Consultancy

Artificial Intelligence

info@gmehealth.com

CAREERS

Medical Equipment Services

Cyber Security

888-905-8825

NEWS

Medical Technology Management



Medical Equipment Planning



Solutions

Integrated Healthcare Solutions

Why Choose GME Health?

At GME Health, we understand that your health journey is deeply personal, which is why we're dedicated to being more than just a healthcare provider—we're your trusted partner. When you choose GME Health for integrated healthcare solutions, including AI, cybersecurity, medical technology management, and medical equipment planning, you're choosing a team that cares about your well-being as much as you do. Our AI-driven solutions aren't just about technology; they're about tailoring care to your individual needs, ensuring that every aspect of your experience is optimized for your best outcomes.

With our robust cybersecurity measures, we prioritize the security and privacy of your personal health information, giving you peace of mind throughout your healthcare journey. And when it comes to medical technology management and equipment planning, our expertise ensures that you always have access to the latest innovations and resources to support your health goals. At GME Health, we're here to walk with you every step of the way, providing personalized, cutting-edge care that empowers you to live your healthiest life.



Artificial
Intelligence



Cyber Security



Medical Technology
Management



Medical Equipment
Planning



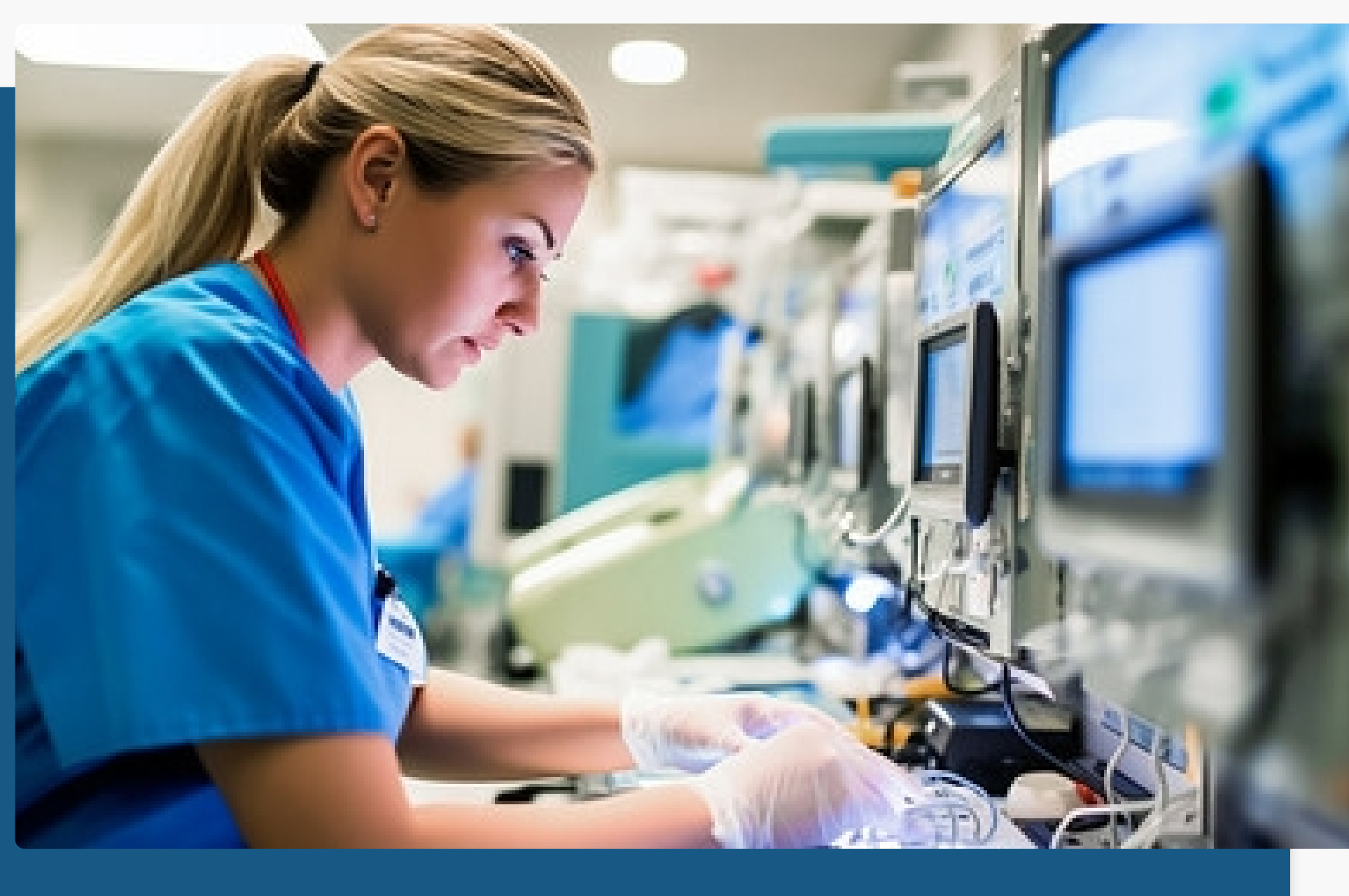
Artificial Intelligence

At GME Health, our AI integration is more than just innovative technology; it's a transformative tool designed to enhance every aspect of healthcare delivery. With our AI solutions, we predict equipment failures within a remarkable 7-day window, ensuring uninterrupted patient care and operational efficiency. By analyzing utilization patterns, we optimize equipment use, maximizing resource allocation and minimizing downtime. Moreover, our AI platform goes beyond predictive maintenance, offering staff training modules that promote proficiency and empower healthcare professionals with advanced techniques. Through AI-driven insights, we identify opportunities for implementing revenue-generating procedures, contributing to the financial health of healthcare institutions. Additionally, our AI capabilities assist in preparing realistic capital budget schedules, enabling strategic resource planning and allocation. With a commitment to reliability, we guarantee 99% uptime on equipment, ensuring continuous service delivery. Furthermore, our AI algorithms pinpoint system failures and inefficiencies, facilitating the implementation of best practice solutions for optimized healthcare delivery. At GME Health, our AI solutions revolutionize healthcare management, driving efficiency, reliability, and excellence in patient care.

Cyber Security

At GME Health, our AI integration is more than just innovative technology; it's a transformative tool. Cybersecurity has become a major issue in organizations, by threatening attacks on (a) Medical devices disrupting care by turning off all types of devices or cutting off power supply in surgery rooms (b) Patient information which includes access to date of birth, social security number, driver license, address, phone number, credit card and much more. The risk and threat of cyberattacks will only grow knowing that were heading towards more date driven and (IIOT) internet.

We can help protect both medical device networks and patient information by working with your in house IS or IT departments and implementing a firewall platform that is updated and monitored by our expert cybersecurity team.



Medical Technology Management

One of GME's pillars is Medical Technology Management where the focus is not only on service but also on connecting with advanced technology. At GME we can bring in solutions using Artificial Intelligence & Machine Learning platforms to be connected with medical equipment.

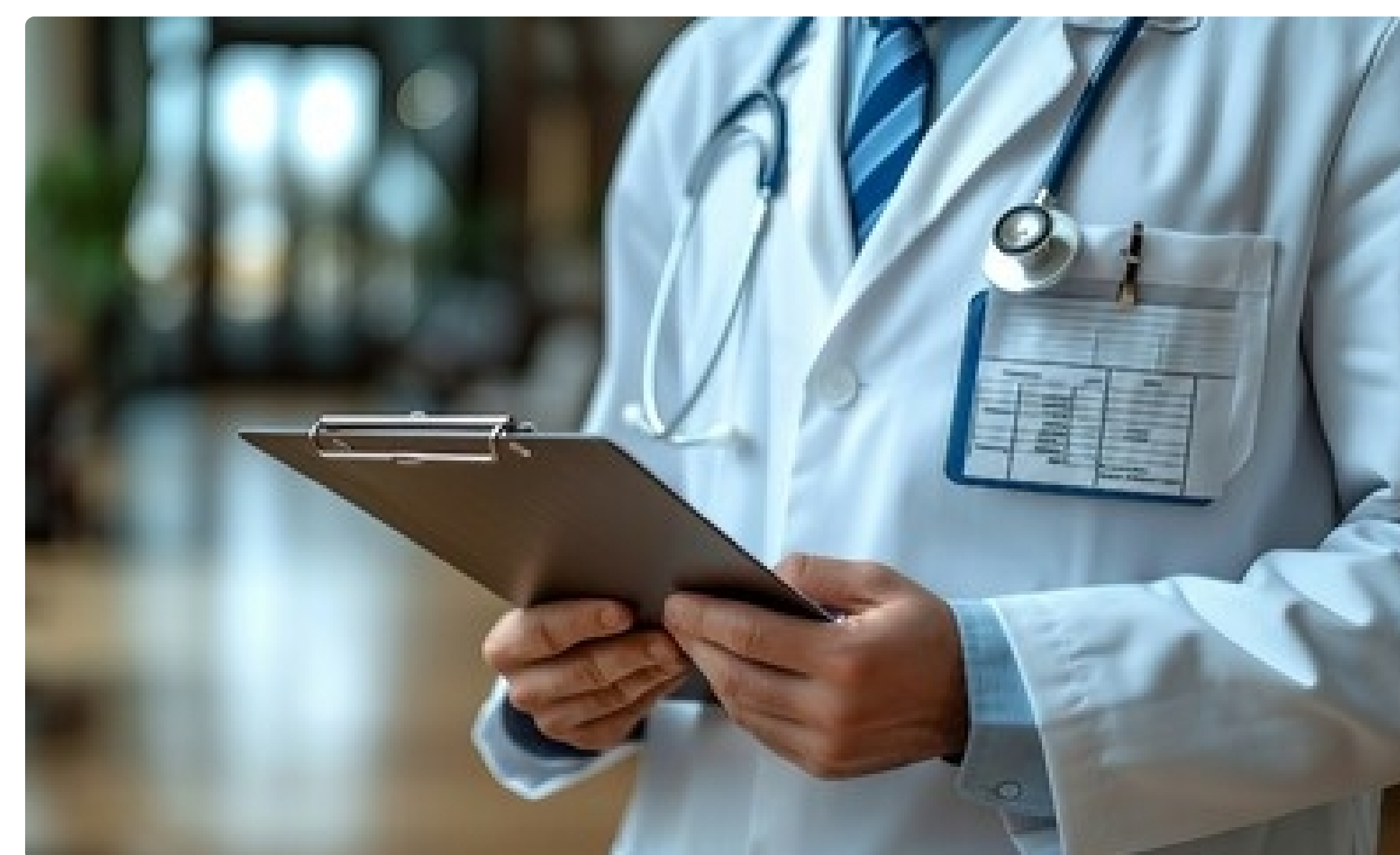
With this program we can manage your complete Clinical Engineering department. If your department is complete we can just come onsite and upgrade it using the latest technology to prevent downtime on equipment.

Another one of our solutions can be used in surgical rooms and centers where we bring state of the art in technology to save money, provide the best in quality of service, and allow your site to boost about advancement.

Medical Equipment Planning

At GME Health, our AI integration is more than just innovative technology; it's a transformative tool. GME is working throughout the world on Medical Equipment Planning where we bring vast knowledge, experience and most importantly purchasing options. Through our research we can be part of your capital budget committees to plan your hospital's goals for future purchase options. From short term emergency situations to long term goals we can find the best plan for you.

GME guarantees the hospital procures the right equipment from the right Original equipment manufacturer (OEM). Taking into consideration the cost, longevity, ease of use for technicians / doctors, parts and services readily available for engineers, overall value and quality of system throughout the house.



Always Deliver
More than Expected

MEMBERSHIP

PARTNERSHIP

CAREERS

NEWS

SERVICES

Consultancy

Medical Equipment Services

WHY GME?

Artificial Intelligence

Cyber Security

Medical Technology Management

Medical Equipment Planning



General Medical Equipment

120 Newport Center Drive, Newport Beach CA 92660

info@gmehealth.com

888-905-8825





Careers



Join The Team

Why Work With Us?



At GME Health, we offer a compelling proposition for individuals seeking employment opportunities. Our innovative approach to healthcare technology presents employees with the chance to contribute to cutting-edge solutions that significantly enhance patient care and outcomes. Additionally, we foster a collaborative and dynamic work environment where individuals thrive, making meaningful impacts in the rapidly evolving healthcare industry. Join us at GME Health and be part of a team driving positive change in healthcare.



Revolutionizing Healthcare Technology

At GME Health, you'll be at the forefront of revolutionizing healthcare technology, developing groundbreaking solutions that enhance patient care and streamline healthcare processes, making a tangible difference in people's lives.



Dynamic and Collaborative Work Environment

Joining GME Health means becoming part of a dynamic and collaborative team where innovative ideas are encouraged and valued, fostering professional growth and fostering a supportive atmosphere where everyone's contributions are recognized and appreciated.



Impactful Career Opportunities

Working at GME Health provides unparalleled opportunities for career growth and development, with the chance to work on diverse projects, collaborate with industry experts, and make a meaningful impact in shaping the future of healthcare through technology.

Revolutionizing Healthcare Technology

GME Health values individuals who show their commitment, and we're always on the lookout for potential team members who align with our mission and values.



Medical Equipment Technician

Apply For Position



Sales Representative

Apply For Position



Data Analyst

Apply For Position

Always Deliver
More than Expected



General Medical Equipment

MEMBERSHIP

SERVICES

WHY GME?

120 Newport Center Drive, Newport Beach CA 92660

PARTNERSHIP

Consultancy

Artificial Intelligence

info@gmehealth.com

CAREERS

Medical Equipment Services

Cyber Security

888-905-8825

NEWS

Medical Technology Management

Medical Equipment Planning





Careers



Join The Team

Why Work With Us?

At GME Health, we offer a compelling proposition for individuals seeking employment opportunities. Our innovative approach to healthcare technology presents employees with the chance to contribute to cutting-edge solutions that significantly enhance patient care and outcomes. Additionally, we foster a collaborative and dynamic work environment where individuals thrive, making meaningful impacts in the rapidly evolving healthcare industry. Join us at GME Health and be part of a team driving positive change in healthcare.

- ✓ Revolutionizing Healthcare Technology
- ✓ Dynamic and Collaborative Work Environment
- ✓ Impactful Career Opportunities



Revolutionizing Healthcare Technology

At GME Health, you'll be at the forefront of revolutionizing healthcare technology, developing groundbreaking solutions that enhance patient care and streamline healthcare processes, making a tangible difference in people's lives.



Dynamic and Collaborative Work Environment

Joining GME Health means becoming part of a dynamic and collaborative team where innovative ideas are encouraged and valued, fostering professional growth and fostering a supportive atmosphere where everyone's contributions are recognized and appreciated.



Impactful Career Opportunities

Working at GME Health provides unparalleled opportunities for career growth and development, with the chance to work on diverse projects, collaborate with industry experts, and make a meaningful impact in shaping the future of healthcare through technology.



Revolutionizing Healthcare Technology

GME Health values individuals who show their commitment, and we're always on the lookout for potential team members who align with our mission and values.

Data Analyst

Apply For Position

Sales Representative

Apply For Position

Medical Equipment Technician

Apply For Position

Always Deliver More than Expected

MEMBERSHIP

SERVICES

WHY GME?

PARTNERSHIP

Consultancy

Artificial Intelligence

CAREERS

Medical Equipment Services

Cyber Security

NEWS

Medical Technology Management

Medical Equipment Planning



General Medical Equipment

120 Newport Center Drive, Newport Beach CA 92660

info@gmehealth.com

888-905-8825



Careers



Join The Team

Why Work With Us?

At GME Health, we offer a compelling proposition for individuals seeking employment opportunities. Our innovative approach to healthcare technology presents employees with the chance to contribute to cutting-edge solutions that significantly enhance patient care and outcomes. Additionally, we foster a collaborative and dynamic work environment where individuals thrive, making meaningful impacts in the rapidly evolving healthcare industry. Join us at GME Health and be part of a team driving positive change in healthcare.



Revolutionizing Healthcare Technology

At GME Health, you'll be at the forefront of revolutionizing healthcare technology, developing groundbreaking solutions that enhance patient care and streamline healthcare processes, making a tangible difference in people's lives.



Dynamic and Collaborative Work Environment

Joining GME Health means becoming part of a dynamic and collaborative team where innovative ideas are encouraged and valued, fostering professional growth and fostering a supportive atmosphere where everyone's contributions are recognized and appreciated.



Impactful Career Opportunities

Working at GME Health provides unparalleled opportunities for career growth and development, with the chance to work on diverse projects, collaborate with industry experts, and make a meaningful impact in shaping the future of healthcare through technology.



Revolutionizing Healthcare Technology

GME Health values individuals who show their commitment, and we're always on the lookout for potential team members who align with our mission and values.

Data Analyst

[APPLY >](#)

Sales Representative

[APPLY >](#)

Medical Equipment Technician

[APPLY >](#)

Always Deliver
More than Expected

MEMBERSHIP

SERVICES

WHY GME?

PARTNERSHIP

Consultancy

Artificial Intelligence

CAREERS

Medical Equipment Services

Cyber Security

NEWS

Medical Technology Management

Medical Equipment Planning



General Medical Equipment

120 Newport Center Drive, Newport Beach CA 92660

info@gmehealth.com

888-905-8825



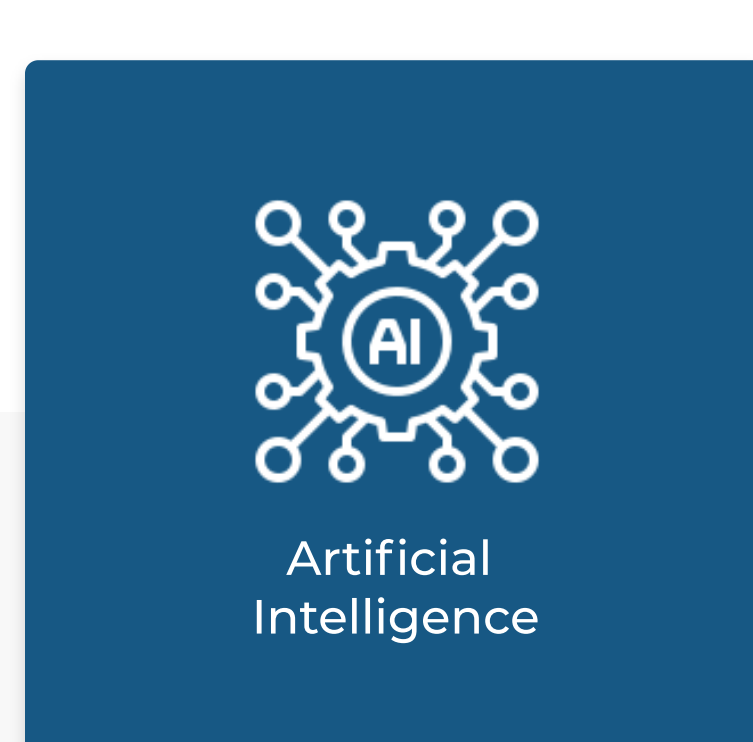
Solutions



Integrated Healthcare Solutions

Why Choose GME Health?

At GME Health, we understand that your health journey is deeply personal, which is why we're dedicated to being more than just a healthcare provider—we're your trusted partner. When you choose GME Health for integrated healthcare solutions, including AI, cybersecurity, medical technology management, and medical equipment planning, you're choosing a team that cares about your well-being as much as you do. Our AI-driven solutions aren't just about technology; they're about tailoring care to your individual needs, ensuring that every aspect of your experience is optimized for your best outcomes. With our robust cybersecurity measures, we prioritize the security and privacy of your personal health information, giving you peace of mind throughout your healthcare journey. And when it comes to medical technology management and equipment planning, our expertise ensures that you always have access to the latest innovations and resources to support your health goals. At GME Health, we're here to walk with you every step of the way, providing personalized, cutting-edge care that empowers you to live your healthiest life.



Artificial Intelligence



Cyber Security



Medical Technology Management



Medical Equipment Planning



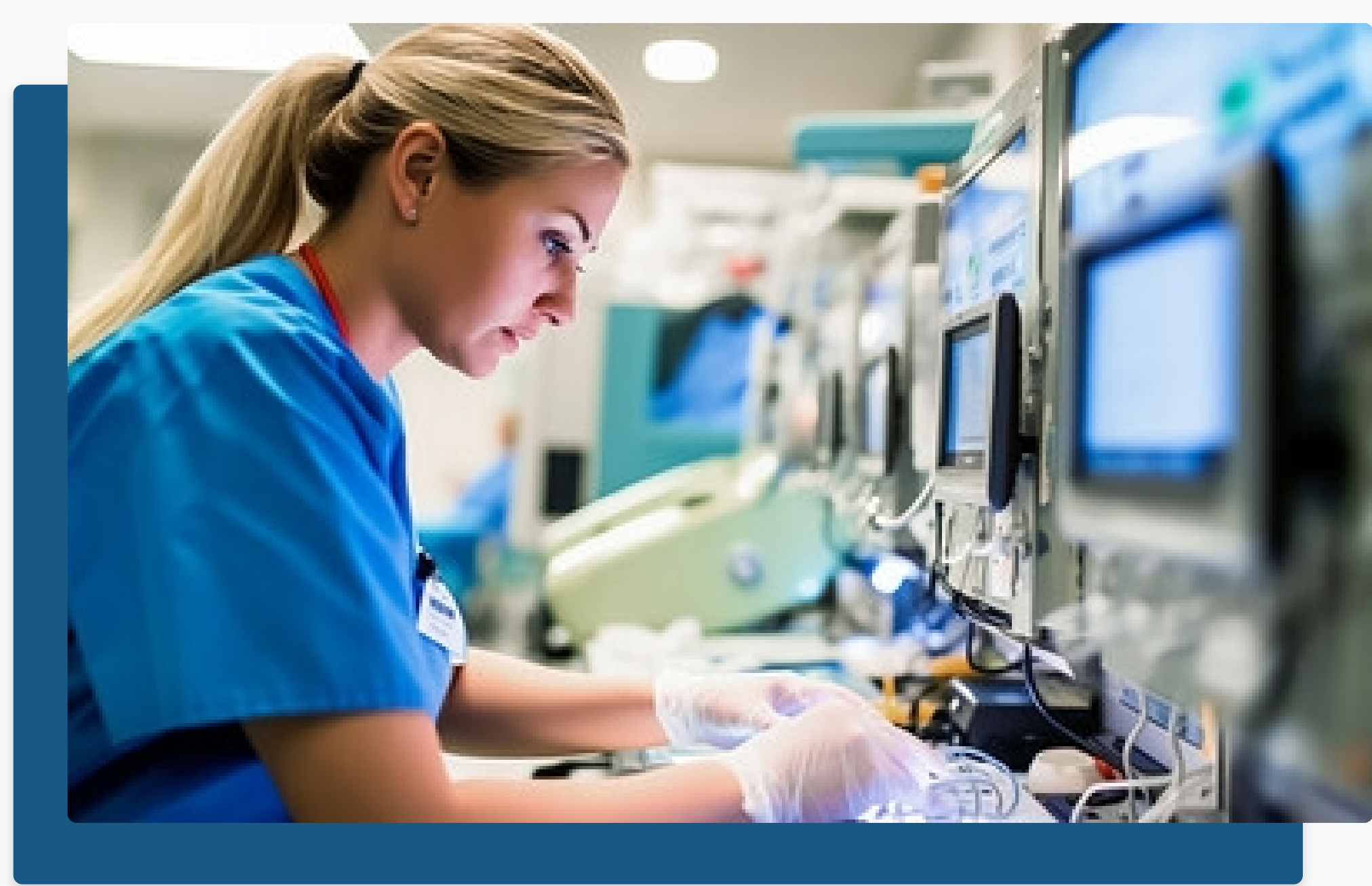
Artificial Intelligence

At GME Health, our AI integration is more than just innovative technology; it's a transformative tool designed to enhance every aspect of healthcare delivery. With our AI solutions, we predict equipment failures within a remarkable 7-day window, ensuring uninterrupted patient care and operational efficiency. By analyzing utilization patterns, we optimize equipment use, maximizing resource allocation and minimizing downtime. Moreover, our AI platform goes beyond predictive maintenance, offering staff training modules that promote proficiency and empower healthcare professionals with advanced techniques. Through AI-driven insights, we identify opportunities for implementing revenue-generating procedures, contributing to the financial health of healthcare institutions. Additionally, our AI capabilities assist in preparing realistic capital budget schedules, enabling strategic resource planning and allocation. With a commitment to reliability, we guarantee 99% uptime on equipment, ensuring continuous service delivery. Furthermore, our AI algorithms pinpoint system failures and inefficiencies, facilitating the implementation of best practice solutions for optimized healthcare delivery. At GME Health, our AI solutions revolutionize healthcare management, driving efficiency, reliability, and excellence in patient care.

Cyber Security

At GME Health, our AI integration is more than just innovative technology; it's a transformative tool. Cybersecurity has become a major issue in organizations, by threatening attacks on (a) Medical devices disrupting care by turning off all types of devices or cutting off power supply in surgery rooms (b) Patient information which includes access to date of birth, social security number, driver license, address, phone number, credit card and much more. The risk and threat of cyberattacks will only grow knowing that were heading towards more date driven and (IOT) internet.

We can help protect both medical device networks and patient information by working with your in house IS or IT departments and implementing a firewall platform that is updated and monitored by our expert cybersecurity team.



Medical Technology Management

One of GME's pillars is Medical Technology Management where the focus is not only on service but also on connecting with advanced technology. At GME we can bring in solutions using Artificial Intelligence & Machine Learning platforms to be connected with medical equipment.

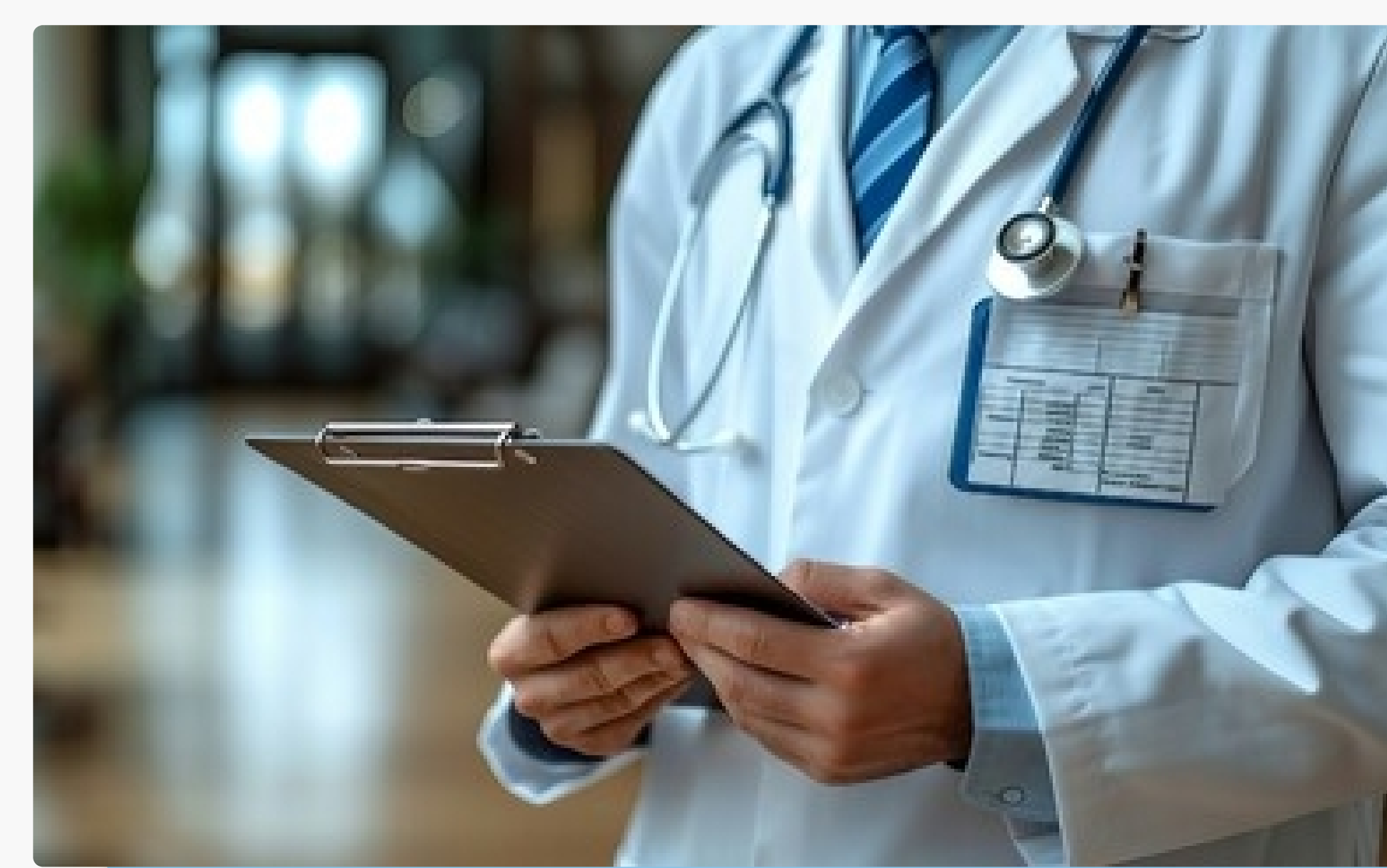
With this program we can manage your complete Clinical Engineering department. If your department is complete we can just come onsite and upgrade it using the latest technology to prevent downtime on equipment.

Another one of our solutions can be used in surgical rooms and centers where we bring state of the art in technology to save money, provide the best in quality of service, and allow your site to boost about advancement.

Medical Equipment Planning

At GME Health, our AI integration is more than just innovative technology; it's a transformative tool. GME is working throughout the world on Medical Equipment Planning where we bring vast knowledge, experience and most importantly purchasing options. Through our research we can be part of your capital budget committees to plan your hospital's goals for future purchase options. From short term emergency situations to long term goals we can find the best plan for you.

GME guarantees the hospital procures the right equipment from the right Original equipment manufacturer (OEM). Taking into consideration the cost, longevity, ease of use for technicians / doctors, parts and services readily available for engineers, overall value and quality of system throughout the house.



Always Deliver More than Expected



MEMBERSHIP

SERVICES

WHY GME?

120 Newport Center Drive, Newport Beach CA 92660

PARTNERSHIP

Consultancy

Artificial Intelligence

info@gmehealth.com

CAREERS

Medical Equipment Services

Cyber Security

888-905-8825

NEWS

Medical Technology Management



Medical Equipment Planning

Solutions



Healthcare Infrastructure Solutions

9 Key Turnkey Hospital Implementations

Health Masters Plan

- Project definition and goals set-up
- Stakeholders identification and governance definition
- Medical, technical, logistics and capacity programs
- Human resources program
- Preliminary list of equipment

Feasibility Studies and Technical Proposals

- Development Assessment – Land and Property
- Site Planning and Code Review
- Environmental Permitting and Land Use
- Water, Sewage and Neighborhood Impact Analysis
- Geotechnical Analysis and Land Survey
- Environmental Study and Report

Financial Engineering

- Development of Quantitative Models
- Research And Risk Analysis
- Development of Financial Strategies
- Structuring Compensation Plans
- Financial Analysis of New Services
- Preparing Quantitative Risk Models

Building and Civil Work International

- Overseeing Design and Construction Process
- Preparing and Managing Overall Civil Works
- Procurement of Furnished equipment
- Development of New Concept of Operations
- Integration of Technology during Construction
- Overseeing Building Standards and Certifications

Installation and Commissioning

- Supervising of Installation Site
- Conducting Site Survey for MEP, Fixtures and Utilities
- Ensuring Correct Adaptation of Equipment
- Maximizing Building Performance
- Sustainable Design and Construction Processes
- Roadmap for Performance Improvement Measures
- Optimizing Delivery of the Project

Technical Training

- Training for Hospital Staff
- Simulator Training and On-Site Training
- Hands-on Technical Service Training
- Operating and Maintaining Hospital Equipment
- Preventive Maintenance and Safety Inspection

Maintenance and Warranty

- Installing, Testing, and Repairing a variety of Multi-Vendor Equipment
- On-Site Coverage Policy for Equipment Maintenance
- Routine and Preventive Maintenance on Medical Equipment
- Warranty and Return Services for All Costly Devices
- Financial Policy for New Equipment Purchase

Human Resources and Procedures

- Assistance with Medical Staff Hiring
- Management in General HR Policies
- Optimizing Background Verification Process
- Assistance with Compensation, Pension and Insurance
- Salary Research and Reports, Payroll and Legalities

Operations and Management

- Delivering Compliant and Reliable Services
- Clinical Asset Optimization
- Managing Maintenance Service Contracts
- Enhancing Clinical Engineering Department
- Managing Multi-Vendor Contracts and Services
- Software Maintenance and Remote Diagnostic Support

Always Deliver
More than Expected

MEMBERSHIP

PARTNERSHIP

CAREERS

NEWS

SERVICES

Consultancy

Medical Equipment Services

WHY GME?

Artificial Intelligence

Cyber Security

Medical Technology Management

Medical Equipment Planning



General Medical Equipment

120 Newport Center Drive, Newport Beach CA 92660

info@gmehealth.com

888-905-8825





Solutions



Healthcare Infrastructure Solutions

9 Key Turnkey Hospital Implementations



Health Masters Plan

- Project definition and goals set-up
- Stakeholders identification and governance definition
- Medical, technical, logistics and capacity programs
- Human resources program
- Preliminary list of equipment

Feasibility Studies and Technical Proposals

Financial Engineering

Building and Civil Work International

Installation and Commissioning

Technical Training

Maintenance and Warranty

Human Resources and Procedures

Operations and Management

Always Deliver More than Expected



General Medical Equipment

MEMBERSHIP

PARTNERSHIP

CAREERS

NEWS

SERVICES

Consultancy

Medical Equipment Services

WHY GME?

Artificial Intelligence

Cyber Security

Medical Technology Management

Medical Equipment Planning

120 Newport Center Drive, Newport Beach CA 92660

info@gmehealth.com

888-905-8825





Solutions



Healthcare Infrastructure Solutions

9 Key Turnkey Hospital Implementations



Health Masters Plan

- Project definition and goals set-up
- Stakeholders identification and governance definition
- Medical, technical, logistics and capacity programs
- Human resources program
- Preliminary list of equipment



Feasibility Studies and Technical Proposals

- Development Assessment – Land and Property
- Site Planning and Code Review
- Environmental Permitting and Land Use
- Water, Sewage and Neighborhood Impact Analysis
- Geotechnical Analysis and Land Survey
- Environmental Study and Report



Financial Engineering

- Development of Quantitative Models
- Research And Risk Analysis
- Development of Financial Strategies
- Structuring Compensation Plans
- Financial Analysis of New Services
- Preparing Quantitative Risk Models



Building and Civil Work International

- Overseeing Design and Construction Process
- Preparing and Managing Overall Civil Works
- Procurement of Furnished equipment
- Development of New Concept of Operations
- Integration of Technology during Construction
- Overseeing Building Standards and Certifications



Installation and Commissioning

- Supervising of Installation Site
- Conducting Site Survey for MEP, Fixtures and Utilities
- Ensuring Correct Adaptation of Equipment
- Maximizing Building Performance
- Sustainable Design and Construction Processes
- Roadmap for Performance Improvement Measures
- Optimizing Delivery of the Project



Technical Training

- Training for Hospital Staff
- Simulator Training and On-Site Training
- Hands-on Technical Service Training
- Operating and Maintaining Hospital Equipment
- Preventive Maintenance and Safety Inspection



Maintenance and Warranty

- Installing, Testing, and Repairing a variety of Multi-Vendor Equipment
- On-Site Coverage Policy for Equipment Maintenance
- Routine and Preventive Maintenance on Medical Equipment
- Warranty and Return Services for All Costly Devices
- Financial Policy for New Equipment Purchase



Human Resources and Procedures

- Assistance with Medical Staff Hiring
- Management in General HR Policies
- Optimizing Background Verification Process
- Assistance with Compensation, Pension and Insurance
- Salary Research and Reports, Payroll and Legalities



Operations and Management

- Delivering Compliant and Reliable Services
- Clinical Asset Optimization
- Managing Maintenance Service Contracts
- Enhancing Clinical Engineering Department
- Managing Multi-Vendor Contracts and Services
- Software Maintenance and Remote Diagnostic Support

Always Deliver More than Expected



General Medical Equipment

MEMBERSHIP

SERVICES

WHY GME?

120 Newport Center Drive, Newport Beach CA 92660

PARTNERSHIP

Consultancy

Artificial Intelligence

info@gmehealth.com

CAREERS

Medical Equipment Services

Cyber Security

888-905-8825

NEWS

Medical Technology Management



Medical Equipment Planning



Solutions



Healthcare Infrastructure Solutions

9 Key Turnkey Hospital Implementations



Health Masters Plan

- Project definition and goals set-up
- Stakeholders identification and governance definition
- Medical, technical, logistics and capacity programs
- Human resources program
- Preliminary list of equipment



Feasibility Studies and Technical Proposals

- Development Assessment – Land and Property
- Site Planning and Code Review
- Environmental Permitting and Land Use
- Water, Sewage and Neighborhood Impact Analysis
- Geotechnical Analysis and Land Survey
- Environmental Study and Report



Financial Engineering

- Development of Quantitative Models
- Research And Risk Analysis
- Development of Financial Strategies
- Structuring Compensation Plans
- Financial Analysis of New Services
- Preparing Quantitative Risk Models

Always Deliver
More than Expected



General Medical Equipment*

MEMBERSHIP

SERVICES

WHY GME?

120 Newport Center Drive, Newport Beach CA 92660

PARTNERSHIP

Consultancy

Artificial Intelligence

info@gmehealth.com

CAREERS

Medical Equipment Services

Cyber Security

888-905-8825

NEWS

Medical Technology Management

Medical Equipment Planning



Solutions



Healthcare Infrastructure Solutions

Smart Hospital Implementations



Integrate Data Collection through Analytics



Facilitate Accessibility to End Users



Building Automation Systems

Always Deliver
More than Expected



Solutions



Healthcare Infrastructure Solutions

Smart Hospital Implementations



Always Deliver
More than Expected



General Medical Equipment

MEMBERSHIP

SERVICES

WHY GME?

120 Newport Center Drive, Newport Beach CA 92660

PARTNERSHIP

Consultancy

Artificial Intelligence

info@gmehealth.com

CAREERS

Medical Equipment Services

Cyber Security

888-905-8825

NEWS

Medical Technology Management

Medical Equipment Planning





Solutions



Healthcare Infrastructure Solutions

Smart Hospital Implementations

GME Health's comprehensive approach to smart hospital implementations integrates data collection with advanced analytics, facilitating accessibility to end users while simultaneously enhancing operational efficiency. By incorporating building automation systems and smart asset maintenance protocols, GME Health optimizes resource utilization rates and improves patient satisfaction. Moreover, through remote monitoring tools and the implementation of smart patient rooms, GME Health enables healthcare facilities to deliver personalized care, ensuring a seamless and efficient healthcare experience for patients while driving innovation in the healthcare sector.



Integrate Data Collection through analytics



Facilitate Accessibility to end users



Building Automation Systems



Smart Asset Maintenance



Improve Utilization Rates



Improve Patient Satisfaction



Remote Monitoring Tools



Smart Patient Rooms

Always Deliver More than Expected



General Medical Equipment*

MEMBERSHIP

SERVICES

WHY GME?

120 Newport Center Drive, Newport Beach CA 92660

PARTNERSHIP

Consultancy

Artificial Intelligence

info@gmehealth.com

CAREERS

Medical Equipment Services

Cyber Security

888-905-8825

Medical Technology Management

Medical Equipment Planning

